



LARG Polyclonal Antibody

Catalog No	YP-Ab-16180
Isotype	IgG
Reactivity	Human;Mouse;Rat
Applications	WB;IHC
Gene Name	ARHGEF12
Protein Name	Rho guanine nucleotide exchange factor 12
Immunogen	The antiserum was produced against synthesized peptide derived from human ARHGEF12. AA range:449-498
Specificity	LARG Polyclonal Antibody detects endogenous levels of LARG protein.
Formulation	Liquid in PBS containing 50% glycerol, 0.5% BSA and 0.02% sodium azide.
Source	Polyclonal, Rabbit,IgG
Purification	The antibody was affinity-purified from rabbit antiserum by affinity-chromatography using epitope-specific immunogen.
Dilution	WB 1:500-2000;IHC-p 1:50-300
Concentration	1 mg/ml
Purity	≥90%
Storage Stability	-20°C/1 year
Synonyms	ARHGEF12; KIAA0382; LARG; Rho guanine nucleotide exchange factor 12; Leukemia-associated RhoGEF
Observed Band	173kD
Cell Pathway	Cytoplasm . Membrane . Translocated to the membrane upon stimulation. .
Tissue Specificity	Ubiquitously expressed. Isoform 2 is found in jejunum and testis.
Function	disease:A chromosomal aberration involving ARHGEF12 may be a cause of acute leukemia. Translocation t(11;11)(q23;23) with MLL.,function:May play a role in the regulation of RhoA GTPase by guanine nucleotide-binding alpha-12 (GNA12) and alpha-13 (GNA13). Acts as guanine nucleotide exchange factor (GEF) for RhoA GTPase and may act as GTPase-activating protein (GAP) for GNA12 and GNA13.,PTM:Phosphorylated upon DNA damage, probably by ATM or ATR.,sequence caution:Contaminating sequence. Potential poly-A sequence.,similarity:Contains 1 DH (DBL-homology) domain.,similarity:Contains 1 PDZ (DHR) domain.,similarity:Contains 1 PH domain.,similarity:Contains 1 RGSL (RGS-like) domain.,subcellular location:Translocated to the membrane upon stimulation.,subunit:Interacts with GNA12 and GNA13, probably through the RGS-like domain. Interacts with RHOA, PLXNB1 and PLXNB2. Interacts through its PDZ domain

**Background**

Rho GTPases play a fundamental role in numerous cellular processes that are initiated by extracellular stimuli working through G protein-coupled receptors. The encoded protein may form a complex with G proteins and stimulate Rho-dependent signals. This protein has been observed to form a myeloid/lymphoid fusion partner in acute myeloid leukemia. Three transcript variants encoding different isoforms have been found for this gene. [provided by RefSeq, Jul 2014],

matters needing attention

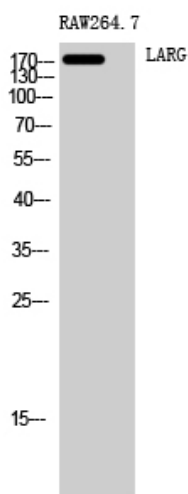
Avoid repeated freezing and thawing!

Usage suggestions

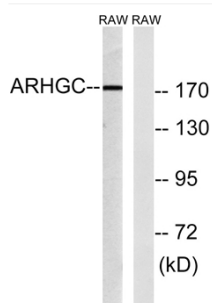
This product can be used in immunological reaction related experiments. For more information, please consult technical personnel.



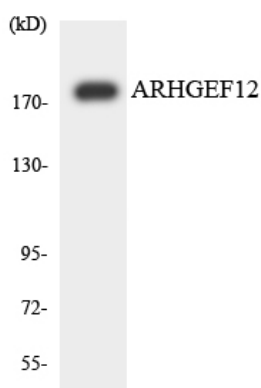
Products Images



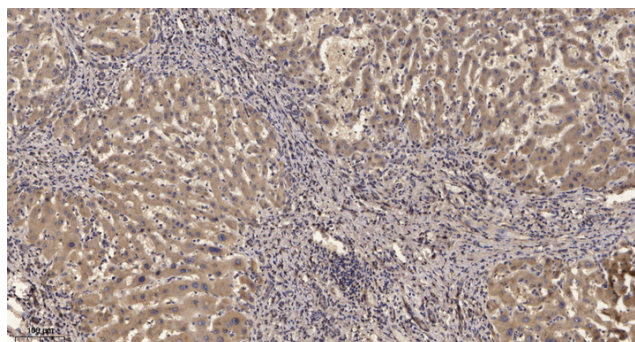
Western Blot analysis of RAW264.7 cells using LARG Polyclonal Antibody



Western blot analysis of lysates from RAW264.7 cells, using ARHGEF12 Antibody. The lane on the right is blocked with the synthesized peptide.



Western blot analysis of the lysates from HUVEC cells using ARHGEF12 antibody.



Immunohistochemical analysis of paraffin-embedded human liver cancer. 1, Antibody was diluted at 1:200 (4° overnight). 2, Tris-EDTA, pH 9.0 was used for antigen retrieval. 3, Secondary antibody was diluted at 1:200 (room temperature, 45 min).